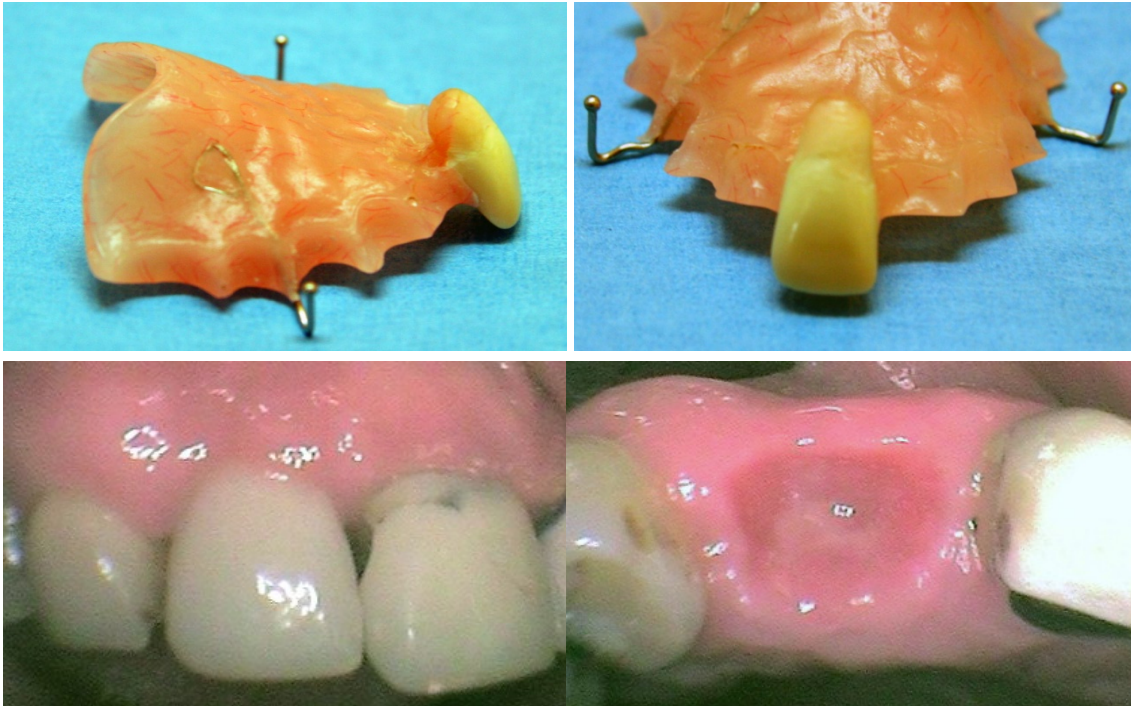


STEINER LABORATORIES

590 Farrington Hwy., #524 suite 132
Kapolei, Hawaii, USA 96707
Ph (808) 689-1710
www.SteinerLabs.com

Lab instructions for the fabrication of an ovate pontic stayplate

Please make an ovate pontic stayplate for the replacement of tooth # ____.
Carry the pontic straight into the socket 3 mm past the buccal gingival margin then round the pontic into an ovate shape for another 1.5 mm. The ovate pontic should end approximately 4.5 mm apical to the buccal gingival margin.
Please provide two clasps for retention.



For further information please visit our website at www.SteinerLabs.com.